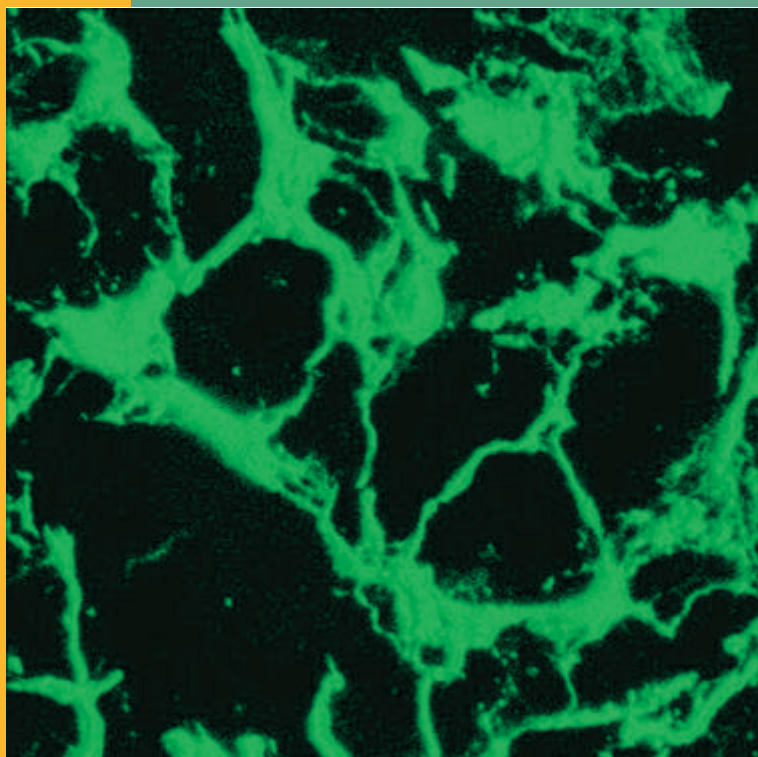


# CLINICAL & EXPERIMENTAL OPHTHALMOLOGY

Volume 31, Number 2, April 2003

ISSN 1442-6404



- CMV-related retinal detachment
- Limited macular translocation in AMD
- Golf-related ocular injuries
- NZ cataract and refractive surgery survey 2001
- Accuracy of the Zeiss IOLMaster
- Topical anaesthesia and endophthalmitis
- Otago Glaucoma Surgery Outcome Study
- Anchoring corneal suture technique in trabeculectomy
- Early surgery for blepharophimosis syndrome
- Toxocara canis* presence and disease incidence
- Confocal imaging of the human keratocyte network
- Pseudohypopyon in presentation of intraocular lymphoma



**Blackwell**  
Publishing

